

400, 600 AND 800 AMP. COMBINATION CURRENT TRANSFORMER SECTION AND DISCONNECT

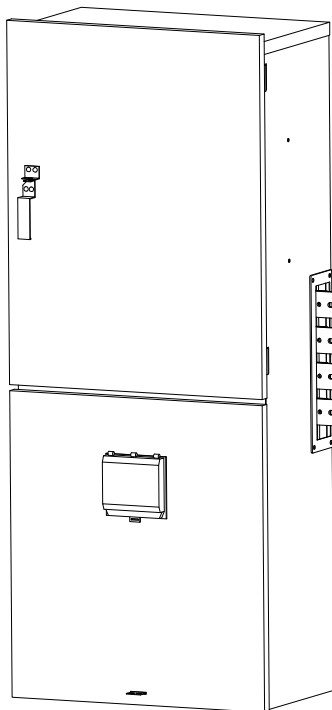
(DISCONNECT AT BOTTOM)

FOR

ERICKSON ELECTRICAL EQUIPMENT CO.

COMMERCIAL METERING PANELBOARDS

FOR 3Ø-4W 480Y/277V. SYSTEMS.



FEATURES:

- TYPE 3R ENCLOSURES FOR OUTDOOR OR INDOOR INSTALLATIONS.
- GANGABLE AND COMPATIBLE WITH TYPE 6CM METERING EQUIPMENT.
- SIMPLE TO INSTALL WITH SINGLE-BOLT MAIN BUS BAR JOINTS.
- ALUMINUM ENCLOSURES INSTALL EASILY, NEVER RUST.
- DISCONNECTS AVAILABLE ARE 400-800 AMPS MAX. CLASS 'T' FUSIBLE SWITCHES OR CIRCUIT BREAKERS.
- LISTED BY UNDERWRITERS LABORATORIES INC., FILE E12208.
- DISCONNECT AT BOTTOM ALLOWS LOAD CABLES TO EXIT AT BOTTOM OR THROUGH BACK.



APPLICATION: FOR USE WITH ERICKSON TYPE '6CM' COMMERCIAL METERING PANELBOARDS AND OTHER METERING EQUIPMENT WHERE A 400, 600 AMP. OR 800 AMP. CURRENT TRANSFORMER SECTION AND DISCONNECT ARE NEEDED.

RATINGS: CURRENT TRANSFORMER SECTION AND DISCONNECT ARE RATED 400, 600 OR 800 AMP., 3Ø 4W, 480Y/277V SYSTEMS MAIN BUS IS RATED 1200 AMP. 800A & 1600A MAIN BUS IS AVAILABLE.

NOTE: SEE BULLETIN 6CM-CTB FOR UNITS WITH THE DISCONNECT AT THE TOP (FOR TOP CABLE EXIT). AVAILABLE WITH CIRCUIT BREAKERS OR PULL OUT SWITCHES.

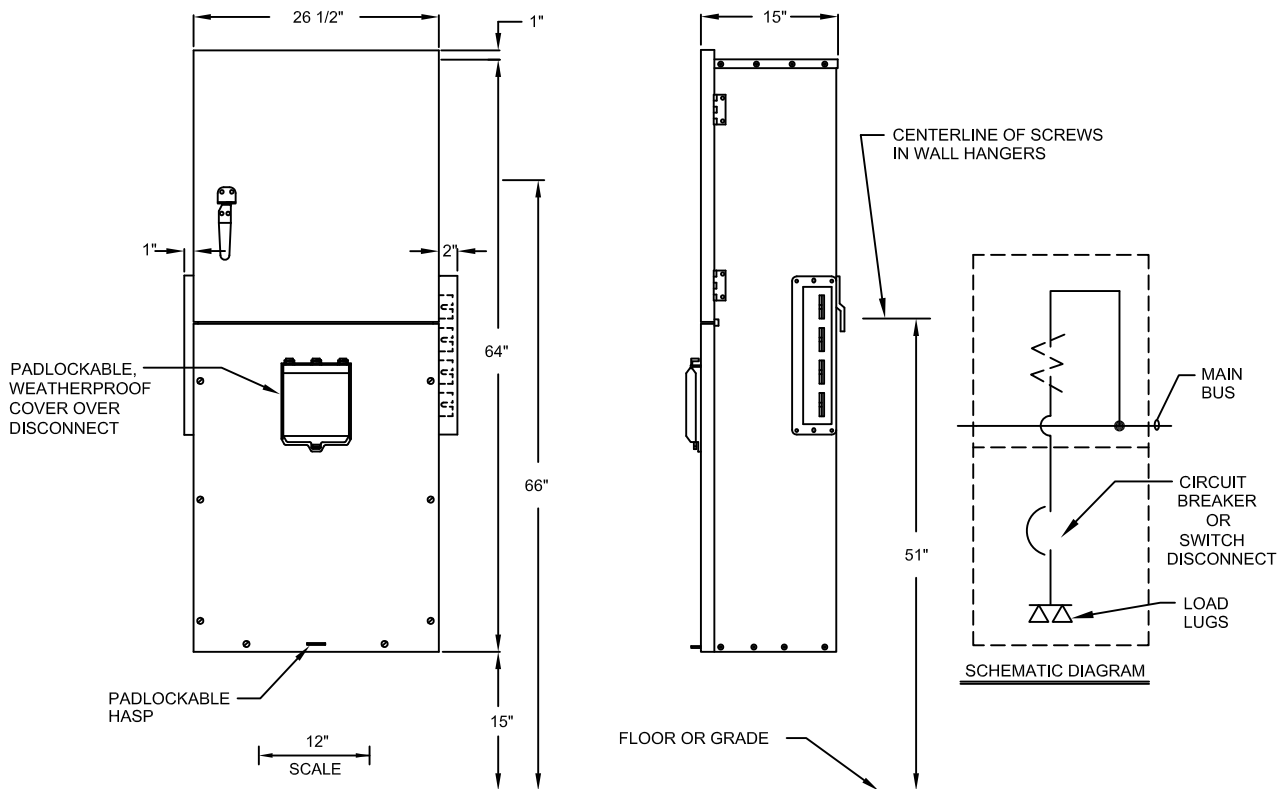
www.ericksonelectric.com

ERICKSON ELECTRICAL EQUIPMENT CO.

475 BONNIE LANE • ELK GROVE VILLAGE, IL 60007

TELEPHONE: (847) 640-7701 / 1-800-952-7225

FAX: (847) 640-0565



NOTES:- END COVERS ARE REMOVABLE, & ARE TO BE INSTALLED ON END UNITS USING CARRIAGE BOLTS TO PREVENT UNAUTHORIZED ACCESS TO BUS BARS.

ENCLOSURES ARE TYPE 3R, FOR OUTDOOR OR INDOOR USE.
APPLICATION: 480Y/277 V.A.C. 3Ø 4W.
SPACER BUS SECTIONS MAY BE REQUIRED. CONSULT UTILITY CO.

CURRENT TRANSFORMER SECTION WITH CLASS 'T' FUSIBLE DISCONNECT SWITCH (480Y/277V.)				
CATALOG NUMBER	AMP RATING	SWITCH TYPE **	LOAD LUG SIZE	SHORT CIRCUIT WITHSTAND RATING
CTA-P-465N-6CM8	400	1-400A PULLOUT	1 - 500 kcmil	200,000 RMS SYM. AMPS.
CTA-P-4644N-6CM8	400	2-200A PULLOUTS	1 - 300 kcmil	200,000 RMS SYM. AMPS.
CTA-T-465N-6CM8	400	BOLTED PRESSURE	1 - 600 kcmil	200,000 RMS SYM. AMPS.
CTA-T-466N-6CM8	600	BOLTED PRESSURE	2 - 600 kcmil	200,000 RMS SYM. AMPS.
CTA-T-467N-6CM8	800	BOLTED PRESSURE	3 - 600 kcmil	200,000 RMS SYM. AMPS.

- ** USE CLASS 'T' FUSES RATED 600V. (BUSSMAN TYPE JJS., LITTLEFUSE TYPE JLLS, GOULD TYPE A6T OR EQUAL) FOR FUSIBLE DISCONNECTS.

CURRENT TRANSFORMER SECTION WITH CIRCUIT BREAKER DISCONNECT (480Y/277V.)				
CATALOG NUMBER	AMP RATING	BREAKER TYPE	LOAD LUG SIZE	SHORT CIRCUIT WITHSTAND RATING
CTA-KD-465N-6CM8	400	KD	1 - 500 kcmil	35,000 RMS SYM. AMPS.
CTA-LD-466N-6CM8	600	LD	2 - 500 kcmil	35,000 RMS SYM. AMPS.
CTA-MD-467N-6CM8	800	MDL	2 - 500 kcmil	50,000 RMS SYM. AMPS.

- THIS EQUIPMENT IS COMPATIBLE WITH TYPE 6CM METERING EQUIPMENT AND MUST BE USED IN CONJUNCTION WITH A MAIN SWITCH, MAIN CIRCUIT BREAKER OR TERMINAL BOX.
- THIS EQUIPMENT MUST BE USED IN CONJUNCTION WITH A TRANSFORMER RATED METER FITTING PER THE UTILITY COMPANY REQUIREMENTS. (NOT PROVIDED)
- SUFFIX "CM8" REFERS TO 1200A COPPER CROSS BUS. (SUFFIX "CM7" INDICATES 800A ALUMINUM BUS. SUFFIX "CM9" INDICATES 1600A COPPER BUS.)